

**Advance Gold Exploration Inc.
Management
Shares
2023 Properties and Pipeline.**



WHO WE ARE

Experienced management
and directors

WHAT WE DO

Upgrade abandoned or
forgotten gold projects

WHERE WE DO IT

Friendly jurisdictions

WHY WE DO IT

Increase shareholder value by
focusing on buy-outs not production

OUR GOAL

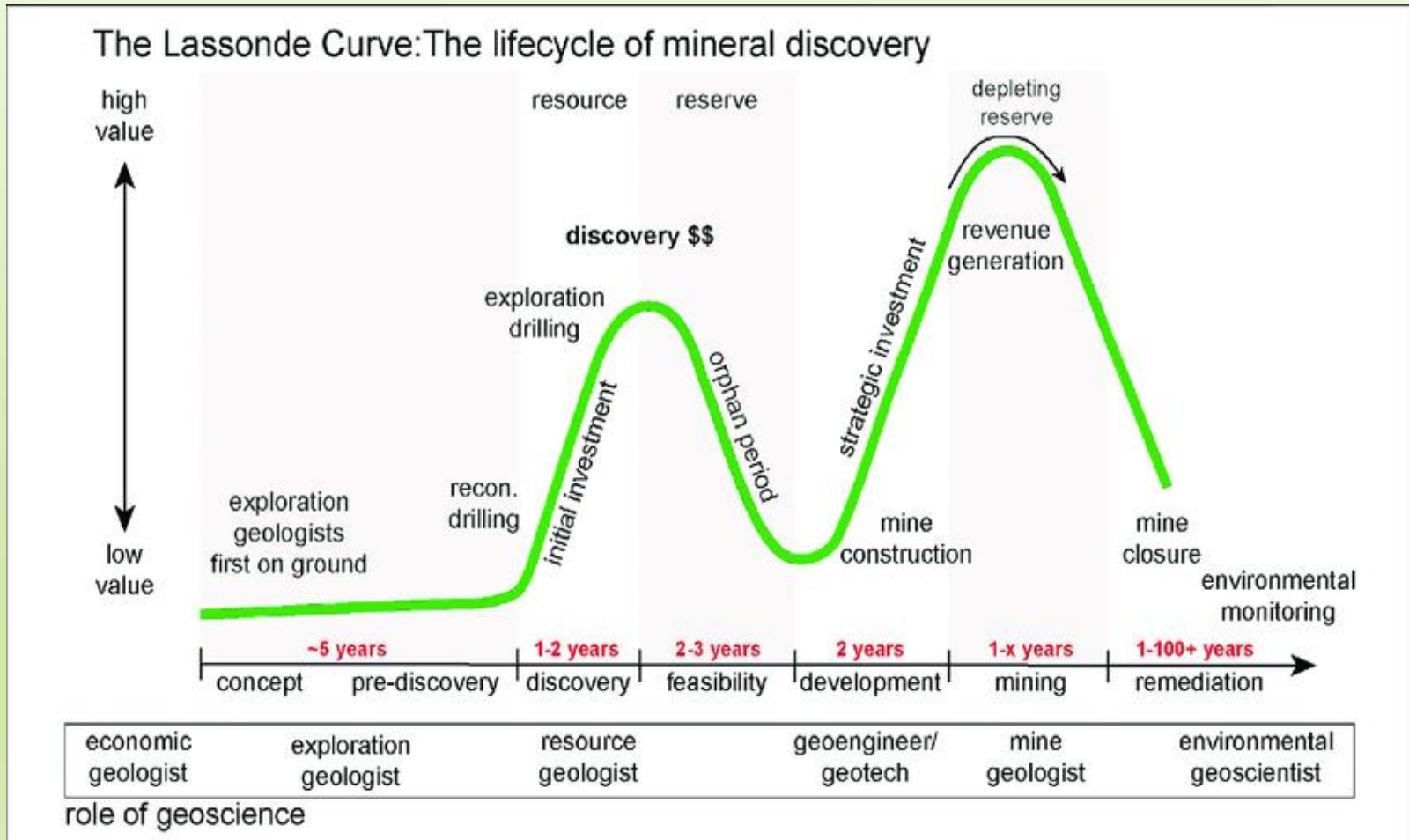
Our expertise is in identifying and acquiring undervalued gold bearing properties then developing and exploiting newly realized and proven value, without mining for gold.

Our purpose is to bring increasing long-term value to our shareholders while reducing risk, so that we can all benefit.

THE PROBLEM

- Most junior mining companies are destined to fail from the start.
- Only a small number survive the journey from the exploration stage to become producing mines.
- This is best illustrated using the Lasso Curve. It shows the risk and potential along the road from early exploration to mine depletion.
- There is a rising period during exploration forming a peak and a valley during the development stage where the value of the junior miner's stock falls.
- THE GOAL IS TO FIND A PURCHASER TO BUY THE PROJECT AT THE PEAK!

THE LASSONDE CURVE



THE SOLUTION

Using our gold exploration financial and technical expertise, modern exploration technology, and our substantial industry network, we are able to arbitrage the value of exploration and pre-development dollars to unlock the potential of these properties.

A significant part is funding the development of NI 43-101 reports, documenting their quantifiable resources and reserves and increasing their asset value.

We intend to grow our portfolio in regions we know to have significant gold-controlling structures and prospective geology, where historical production has been high and social and regulatory environments are favorable.

We then work to find “developers” to take the next steps. In this way we bridge the ‘Orphan Period’ valley illustrated in the Lasonde Curve



FORTUNE FAVORS THE JUNIORS?

Investors made a fortune buying stocks at 2016 levels. But, the opportunity in today's market is better still.

With commodity prices remaining relatively high, there's a gaping mismatch between the fundamental strength of the resource sector versus equity valuations.

Junior Mining companies, who provide the exploration expertise will be favored in the upcoming market.

PROJECTS

PROJECTS

We currently have 3 projects in the gold and 1 in the copper space in Canada and one in the USA . We are actively evaluation further acquisitions.

Gold Projects

1. Melba - Kirkland Lake, Ontario
2. Doyle – Batchewana, Ontario
3. Paint Lake Road – Wawa, Ontario
4. Landrum - South Carolina, USA

Copper Projects

1. Buck Lake – Batchewana, Ontario

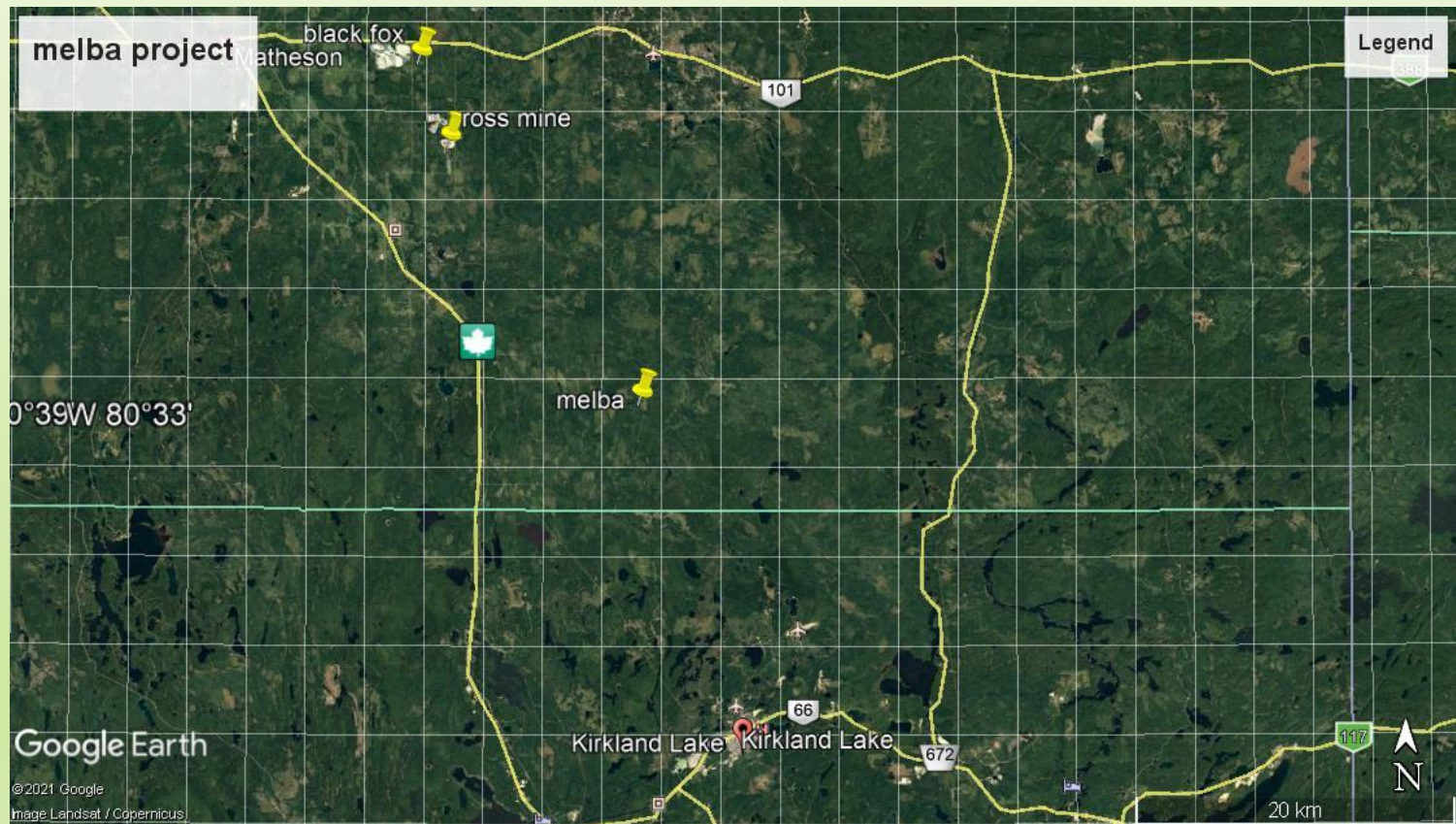
- Technical Details in Appendix

An aerial photograph of a winding river flowing through a deep valley. The river is a milky, light brown color, contrasting with the dark, rocky terrain. The valley walls are steep and rugged, with some patches of green vegetation. In the distance, a range of mountains is visible under a hazy sky. The overall scene is dramatic and scenic.

MELBA

Former Gold Mine in the
Kirkland Lake area

MELBA LOCATION IS 15 KM NORTH OF KIRKLAND LAKE



WE ARE IN GOOD COMPANY IN THE LARGEST GOLD PRODUCING AREA IN CANADA

The project is located in the Abitibi Greenstone Belt host to many past and current gold producers.

A list of active producing, past producers and exploration companies in the area includes Ross Mine, Holtyre, Fen-Gib.

Pelangio Exploration, Grenfell project Inc.

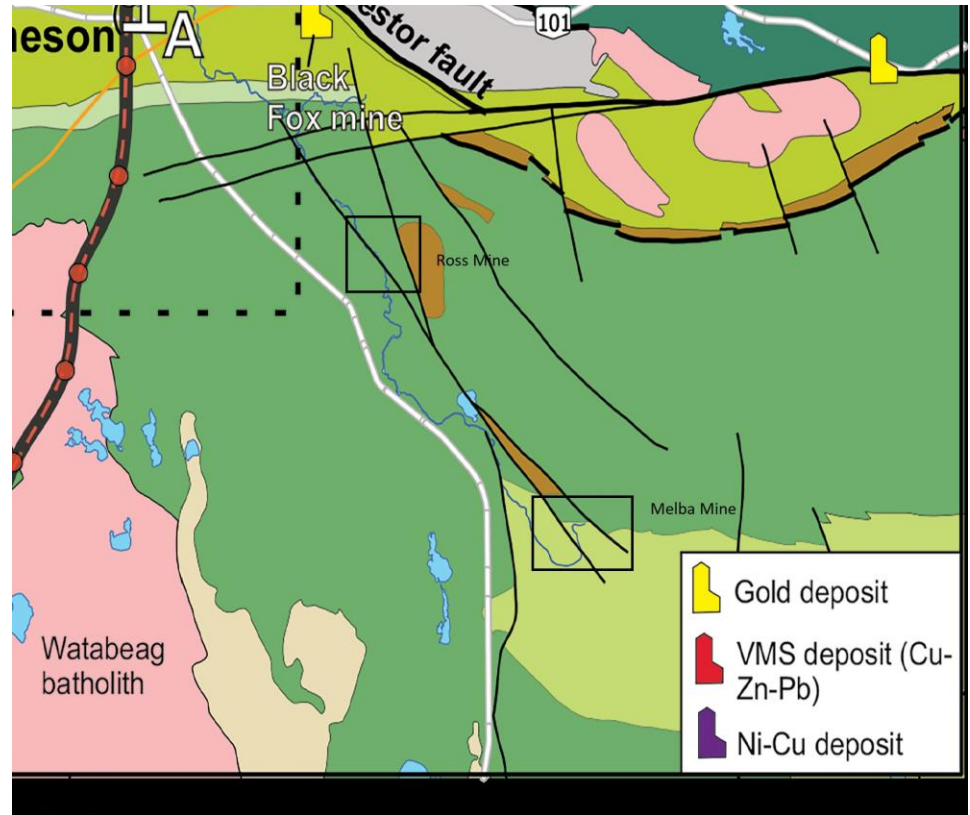
McEwen Mining Inc., Black Fox and Lynx projects.

Moneta Gold, Galleon Gold Corp, Mayfair Gold Corp, Warrior Gold, McLaren Resources Inc. Alamos Gold Inc., Kirkland Lake Discoveries, Agnico Eagle Mines Ltd., High Gold Munro - Croesus.

Kirkland Lake Discoveries is actively exploring to the east of the Melba Property and McEwan is drilling to the north on the Lynx Property.

SITUATED
ALONG MAJOR
NNW TRENDING

“LINKING STRUCTURE”
FROM THE PORCUPINE
DESTOR FAULT



MELBA TYPICAL ABITIBI SETTING

- 15 km from Kirkland Lake in Abitibi Greenstone Belt
- Shear-Hosted Quartz Veins and altered sediments in greenstone belt associated with strong shear zone
- 88 Claim Units and Lease covering the previous mine and extensions
- On strike from former producing Ross Mine + 1.2 million ounces of gold and 1.5 million ounces of silver.
- On major NNW trending structure between Porcupine-Destor and Cadillac-Larder Breaks both very prolific regional gold structures.
- Visible Gold (VG) in four surface veins exposed on surface.

SURFACE SAMPLING

- Samples collected on surface during preliminary prospecting included 40 samples over 1 g/t gold and 12 over 2 g/t gold including maximums of 14.6 g/t, 11.3g/t and 22.5 g/t gold
- Visible gold was identified in quartz veins on surface
- Channel sampling returned values of 73 g/t and 135 g/t gold over 1- meter lengths in quartz veins

VISIBLE GOLD



RESOURCE AND EXPLORATION

- Non 43-101 compliant resource of approximately 50K ounces of gold in underground workings and approximately 4,000 tonnes of gold-bearing material from the underground workings remain on surface.
- 1500 m drill program completed in 2022 to twin former gold intersections in areas of resource and explore other veins with VG at surface which had not been drilled.
- Assays from recent drilling have returned gold values in veins
- A new gold mineralization type was identified – gold in pyritic alteration over 10s of meters

POTENTIAL

- Assessment Report 42A08SE2005 Gleeson- Ross Mine page 10 indicates the Melba mine site includes a geological signature similar to the Ross Mine, to the NW on strike, in Holtyre.
- No exploration has been carried out to the north or south of the surface exposures in swamp covered areas.

DRILLING WAS COMPLETED IN 2022
TOTALING 1500 METERS.



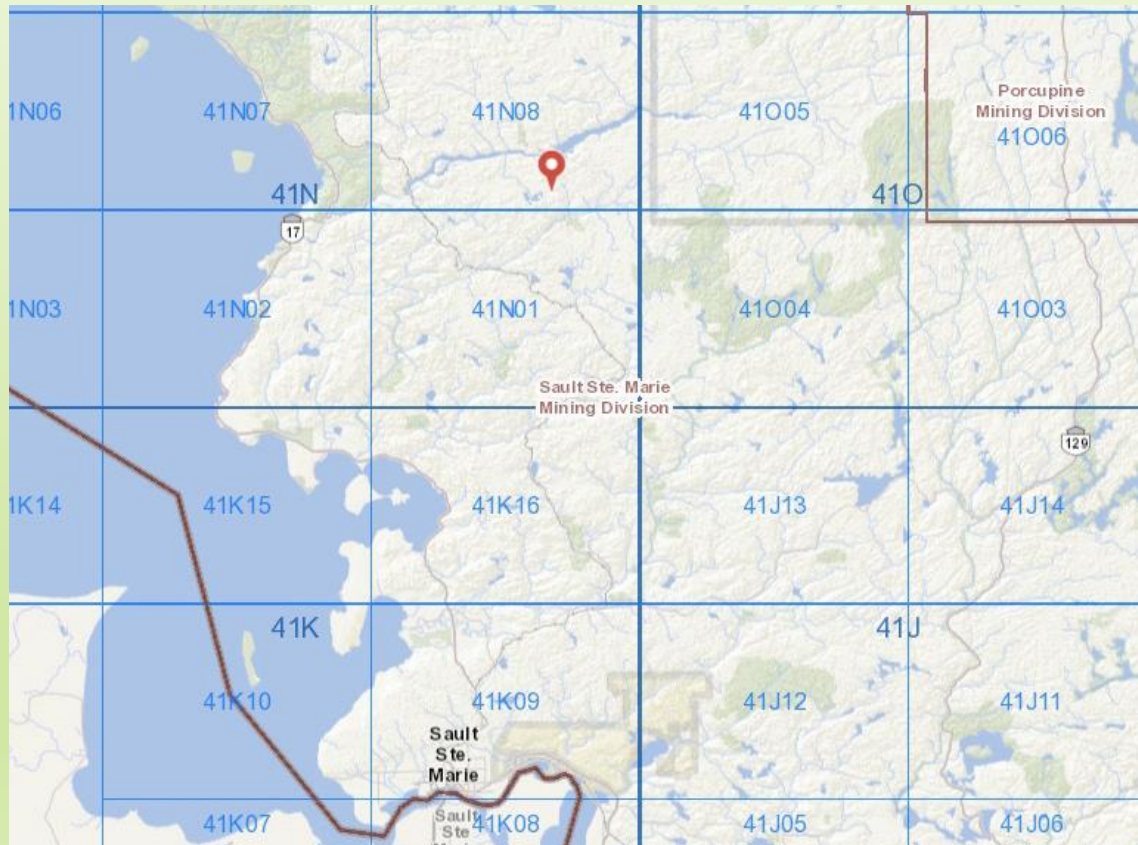
FURTHER WORK

- Exploration has not been carried out to the north or south of the exposed veins.
- The major structure identified in drilling with breccia and shearing is known to continue in these directions and may extend to the Ross Mine area.
- Further work will include geophysical surveys (VLF EM and possibly IP) to trace the structures.
- Mapping of the gold bearing dykes will be carried out where exposed and further drilling and assaying of this target will be completed.

DOYLE

Searching for
another Hemlo in
the Batchewana
Greenstone Belt

DOYLE PROPERTY LOCATION NORTH OF SAULT STE MARIE



FURTHER WORK

- Exploration has not been carried out to the north or south of the exposed veins.
- The major structure identified in drilling with breccia and shearing is known to continue in these directions and may extend to the Ross Mine area.
- Further work will include geophysical surveys (VLF EM and possibly IP) to trace the structures.
- Mapping of the gold bearing dykes will be carried out where exposed and further drilling and assaying of this target will be completed.

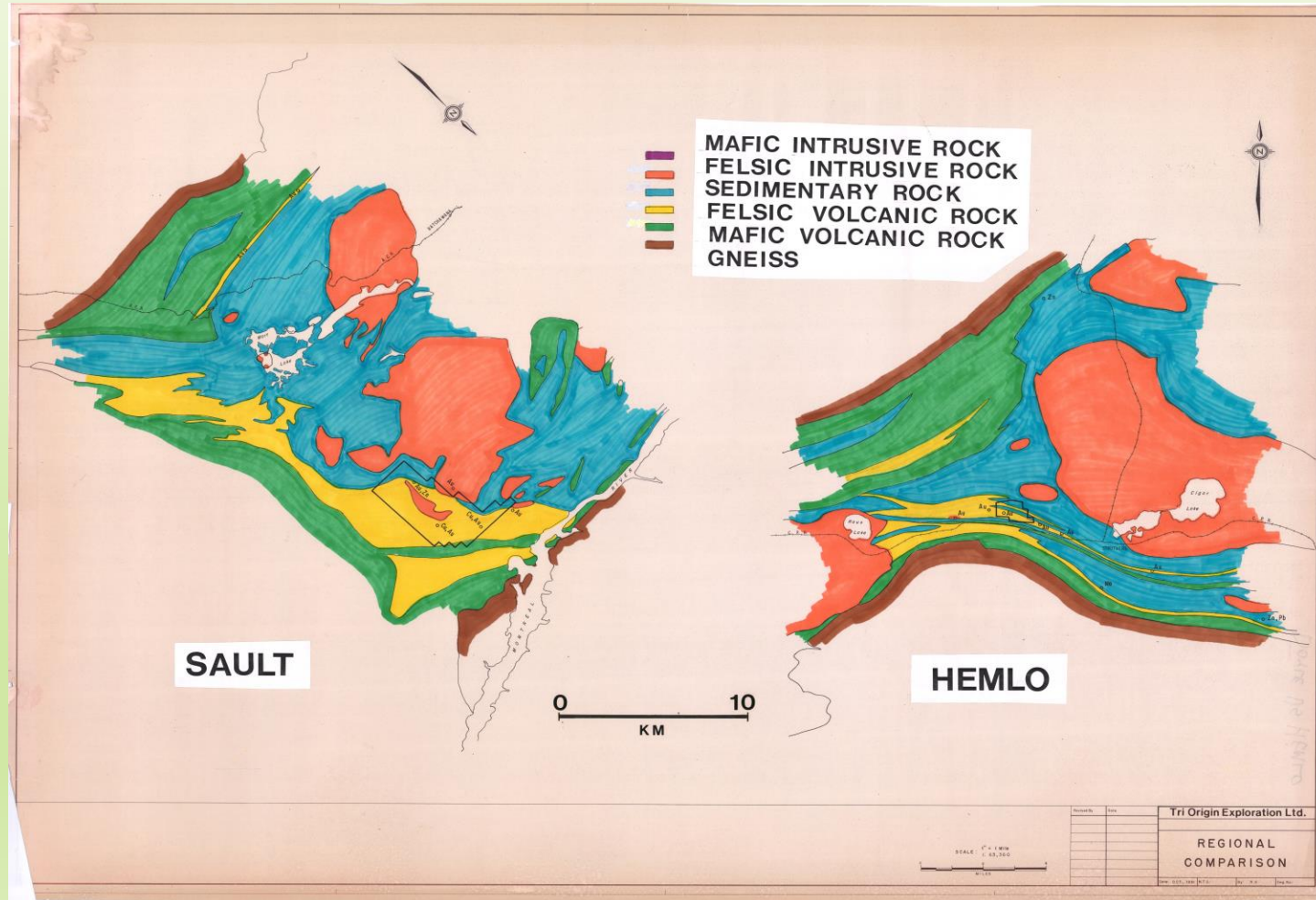
THE DOYLE PROPERTY REGIONAL GEOLOGY

- The property lies in the Batchawana Greenstone Belt (BGB) within the Abitibi Sub-province of the Canadian Shield
- The Batchawana Greenstone Belt is similar to the Wawa and Abitibi Belts in comprising volcanic and sedimentary units which contain gold and base metal deposits
- It is made up of an Eastern and Western Domain.
- Interestingly the Eastern Domain has a dominantly N-S orientation as opposed to the generally E-W orientation of other Greenstone Belts.
- The BGB has not been explored since the mid- to late 1980s.

DOYLE HEMLO TARGET, GOLD

- Large property – over 1 69 claim units = 3,900 Hectares
- Geology and mineralization resembles Hemlo (>21 million ounces of gold)
- Past work included drilling (37 holes for 8500 m) extensive IP coverage, stripping and sampling, geological mapping and reconnaissance geochemistry, VLF EM and limited prospecting
- Occurrences of copper and zinc are common in the gold bearing strata

DOYLE AND HEMLO



RECENT WORK

- Lidar Survey completed - gives detail of shear zones related to known gold occurrences and point to areas prospective for gold discoveries.
- Currently planning drilling in four prospective areas to follow-up previous intersections and newly discovered mineralization and test known unexplored shear zones and new zones indicated by the LiDAR interpretation

WHERE IS THE GOLD?

- Gold is found across the property with anomalous and lower grade occurrences common
- High grade gold is known in three areas on the property from past drilling
 - Drill hole 94-22 = 46 g/t Au over 1.0 m in Quartz Vein
 - Drill Hole 95-34 = 14.6 g/t Au over 1 m in 9.0 m zone of 2.5 g/t Au in disseminated pyrite zone
 - Drill Hole 93-03 = 7.5 g/t over 1 m in massive sulphide
- All areas need Follow-up

EXISTING TRENCH NEED CLEANING FOLLOWED BY MAPPING AND CHANNEL SAMPLING



US BASED PROPERTIES

The Carolina
Gold Belt

US PROPERTIES

- Situated in The “Carolina Slate Belt” in South Carolina
- Site of the first “Gold Rush” in the United States – before California!
- Can still pan Gold in some streams in the area
- Site of five past producers and one current producer – Haile (2.45 million ounces Proven and Probably and 2.98 million ounces M&I).
- The geology of the gold mineralization has been compared to Newfoundland

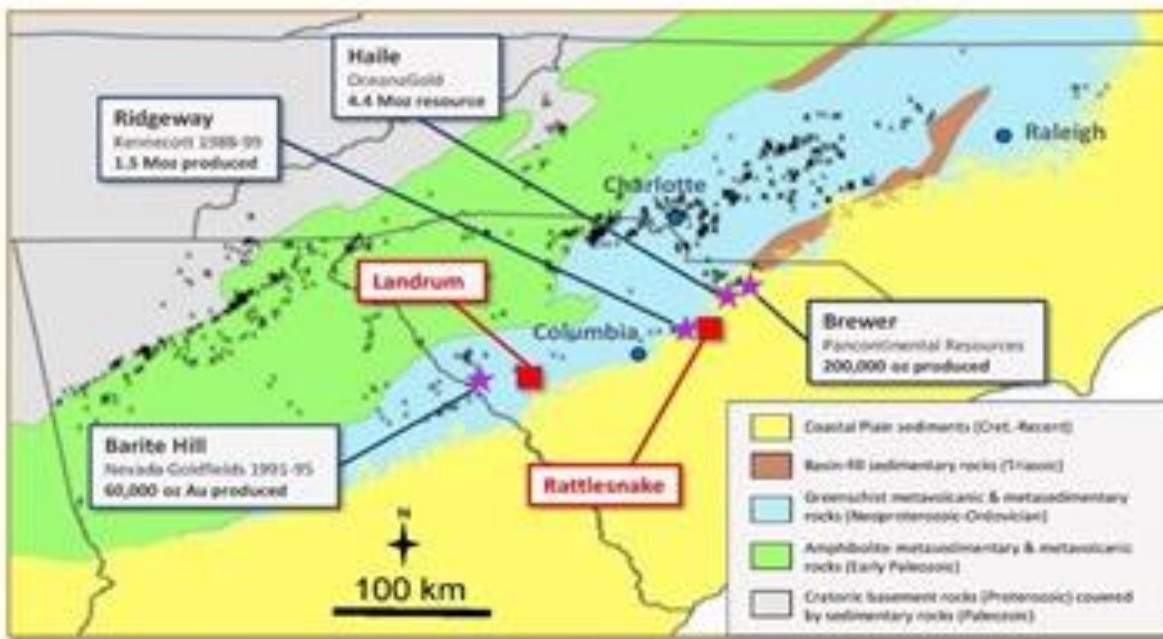
US PROPERTIES

- Situated in The “Carolina Slate Belt” in South Carolina
- Site of the first “Gold Rush” in the United States – before California!
- Can still pan Gold in some streams in the area
- Site of five past producers and one current producer – Haile (2.45 million ounces Proven and Probably and 2.98 million ounces M&I).
- The geology of the gold mineralization has been compared to Newfoundland

LANDRUM

USA PROPERTIES, GOLD IN SOUTH CAROLINA SLATE BELT

Prolific Gold Mineralization CGR Projects / Historic Gold Producers Carolina Gold Belt



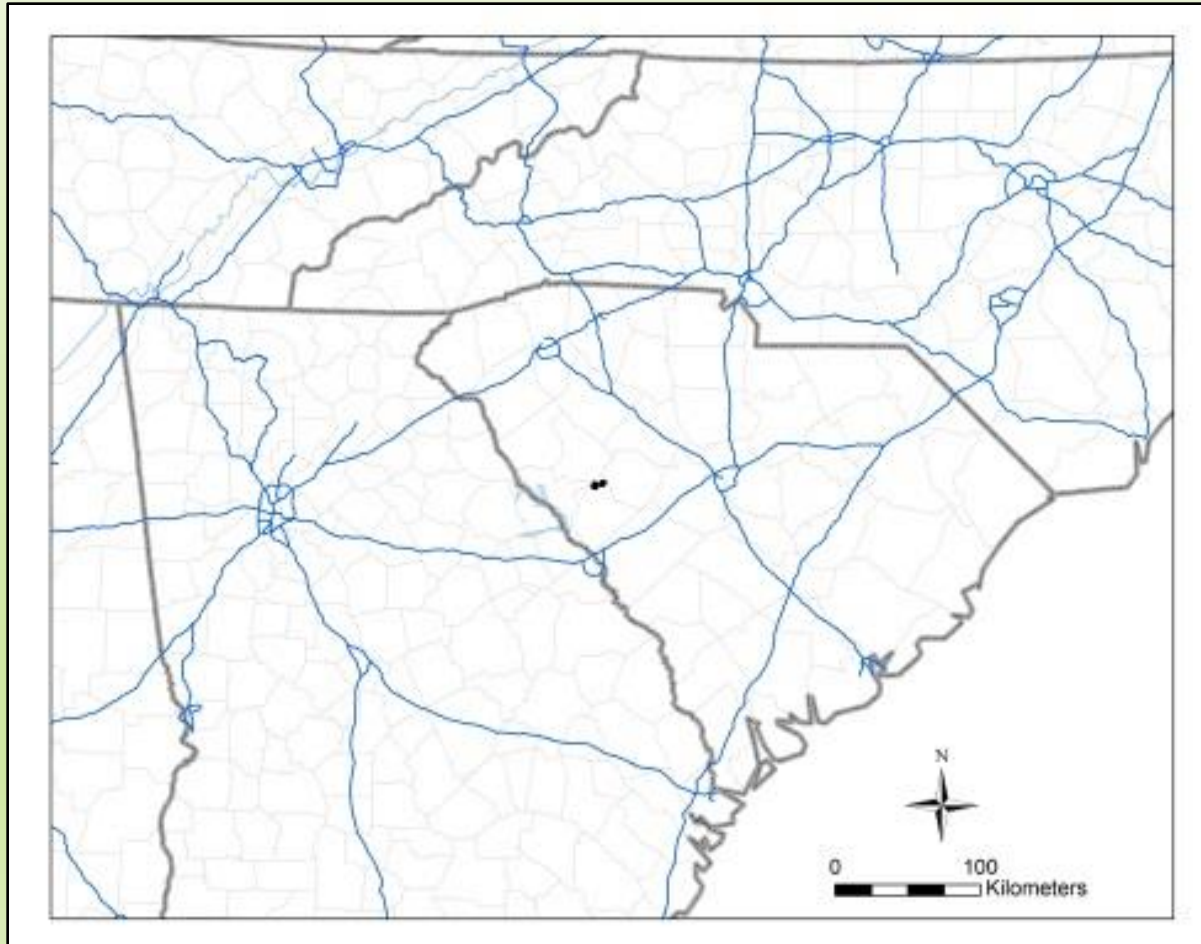
★ Important Historical Mines
x Small Historical Mines & Prospects

■ CGR Properties

LANDRUM-FAULKNER

- The project is made up of two mineralized areas – Landrum and Faulkner.
- The Landrum property covers a past producing mine and extensions of the mineralized veins similar to typical orogenic gold occurrences.
- The Faulkner project contains gold in drill holes related to an epithermal target.

LANDRUM- FAULKNER LOCATION SOUTH CAROLINA



LANDRUM

- Situated in Edgefield County South Carolina
- The Landrum veins consist of silicified zones generally made up of 20-50% quartz with admixed sericitized argillite containing 2-10% pyrite with trace chalcopyrite.
- The veins vary in thickness from less than a meter to 10 meters and occur within a broad sericite-quartz-calcite-pyrite altered shear zone in argillite.
- The veins and shear strike roughly N45°E and dip 60-70°NW. and are open to depth and along strike
- Preliminary non-43-101 Resource of 68,000 ounces of gold average grade 4.8 g/t in an average thickness of 8.2 meters
- All Grab samples collected by AUHI all contained gold with the highest at 115 g/t.



Wawa-Abitibi
Subprovince

*Paint Lake Road
Property*

Timmins

Thunder Bay

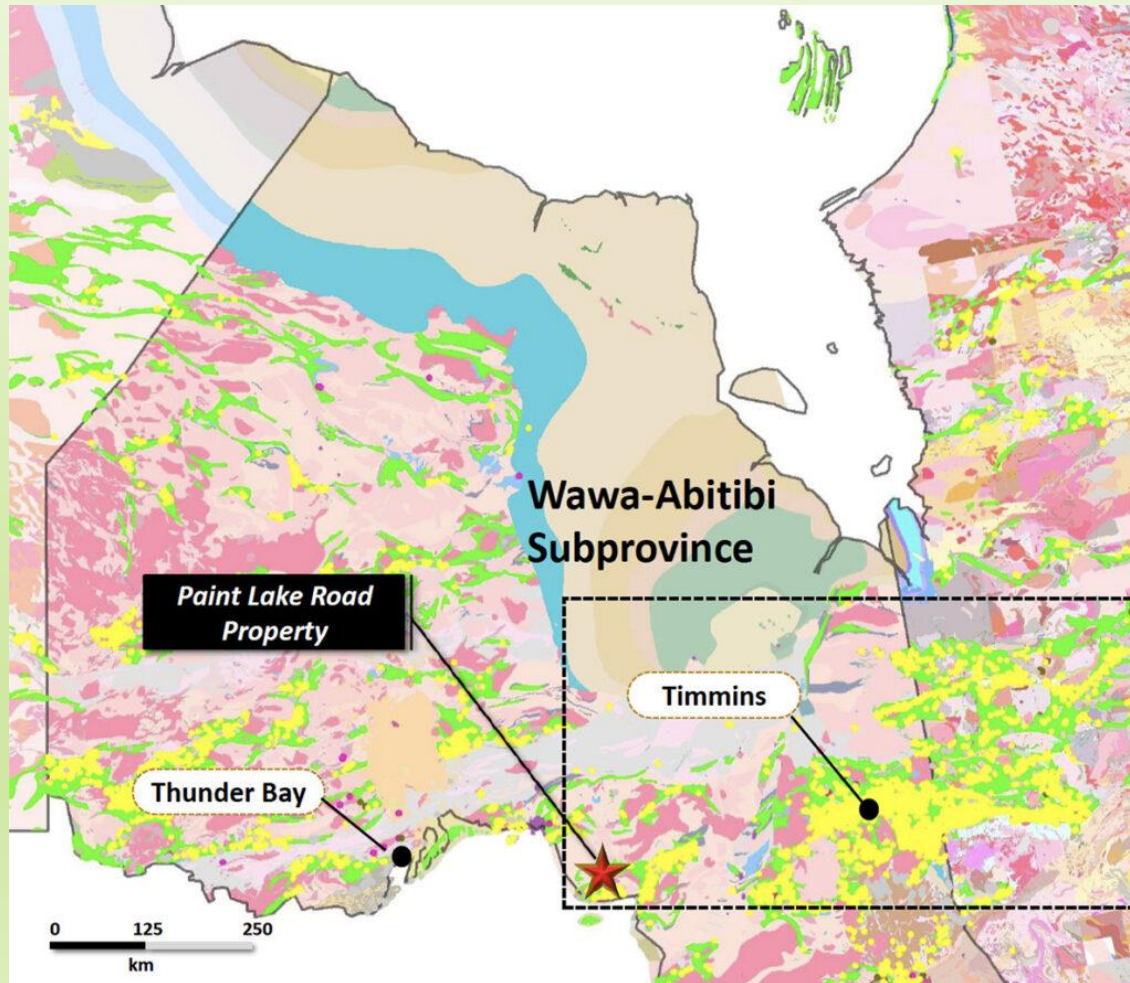
PAINT LAKE ROAD JOINT VENTURE



An aerial photograph of a terraced tea plantation. The tea bushes are arranged in neat, curved rows that follow the contours of the land. The overall color is a vibrant green. In the lower right quadrant, there is a small, simple wooden building with a dark roof. The text 'PAINT LAKE ROAD JOINT VENTURE' is overlaid in the center in a bold, white, sans-serif font.

PAINT LAKE ROAD JOINT VENTURE

PAINT LAKE ROAD WESDOME TARGET: GOLD AND BASE METALS

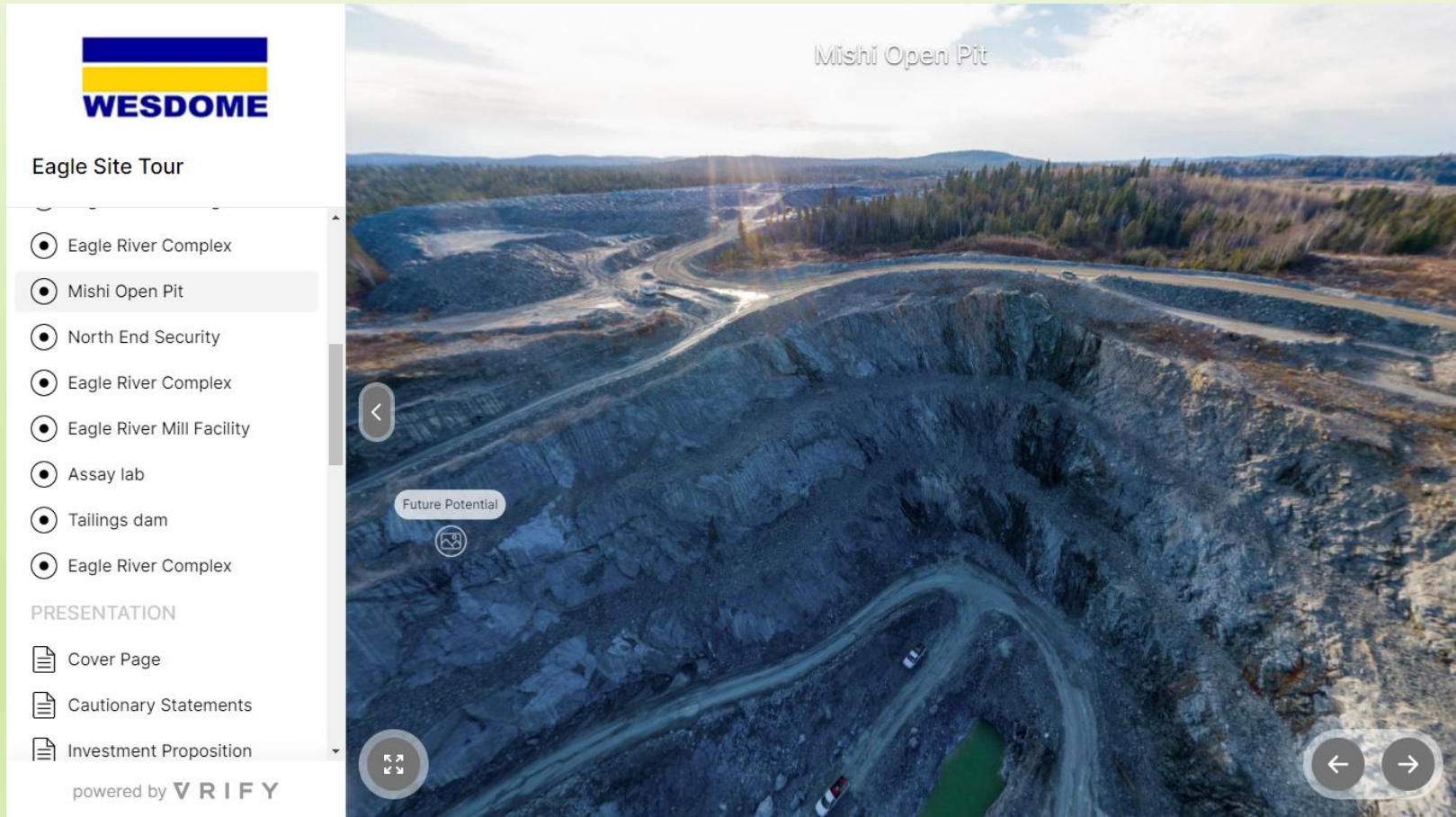


PAINT LAKE ROAD

WESDOME TARGET: GOLD AND BASE METALS

- Less Than 5 km from Wesdome's Mishi Open Pit
- Overlies Iron Lake/Pukaskwa Shear Zone (ILP Shear)
- Gold deposits to the north (Abbie lake owned by Angus Gold) further east have Island Gold owned by Alamos
- Gold Deposit to the South (Davis Lake deposit owned by Wesdome)
- Completed VLF EM survey in 2022 to follow up airborne survey completed in the 1980s
- Discovered four anomalous zones possibly indicating the presence of subsidiary shearing from the ILP Shear Zone.
- Identified a very strong conductor on the main shear zone
- VTEM survey on adjacent Bold Ventures property shows strong anomalies at property boundary trending onto JV Property
- Government lake sediment survey identified 100 ppm Cu and 975 ppm Zn on property
- Prospecting and sampling planned for 2023

MISHI OPEN PIT - NOTICE SHEARING THIS IS ON STRIKE WITH PART OF THE PAINT LAKE ROAD JV CLAIMS TO THE WEST.





BUCK LAKE

VMS Target

BUCK LAKE

VMS TARGET - COPPER AND ZINC.

- Large property – 179 Clam units = 4100 Hectares surrounded by open ground
- Highly prospective volcanic stratigraphy with felsic-intermediate/mafic contacts throughout
- At least eight known areas of mineralization on the property with chalcopyrite and sphalerite in trenches and drill holes
- Values up to 15% Cu and 12 to 15 % Zn in drilling and trenching
- Recently completed channel sampling and 2540 m of drilling in main 3500 m long EM anomaly
- Massive to semi-massive sulphides exposed on surface and in 13 of 15 drill holes with copper and/or Zinc mineralization
- Massive Sulphide zone is 500 m long and drilled to 140 m depth – open in all directions
- Assays received for the drilling demonstrate presence of copper and zinc in several zones within the massive sulphide
- Gold is present in higher grade copper intersections

MANAGEMENT

James Atkinson M.Sc., P. Geo. – CEO and Director

President of Talisker Gold Corp. Director of Frontline Gold, CBLT, Big Red Mining

Over 50 years in the Mining , Exploration and Environmental Business with major and Junior mining companies exploring and developing base metal and gold as well as industrial minerals.

Recently arranged sale of Talisker assets to Angus Gold for cash and shares wick were distributed to Talisker shareholders and special dividend.

Radovan Danilovsky – CFO and Director

President and CFO of McLaren Resources Inc. Director and Corporate Secretary of Carshaw Gold Mines Ltd. Manager and Chief Compliance office of Orthogonal Capital Management Corp.

DIRECTORS

Walter Henry – Independent Director

President and CEO Frontline Gold Inc.

Currently, Mr. Henry serves as a Director of Riverside Resources, Alturas Minerals Corp, Gold Candle Ltd., and Talisker Gold Corp. He has held various Chairman, Audit Committee Chairman and Director roles, in the following companies: Alexandria Minerals Corporation, Alturas Minerals Corp., Merrex Gold Corp, and Platinex Inc.

Mr. Henry has completed the requirements of the CFA program and Institute of Corporate Directors - Director Education Program.

Rodney Ireland – Independent Director

Board Member Sensor Technologies and Green Panada Capital Corp.

Rodney is well known for hosting various marketing podcasts including Bay Street Radio and Corporate Coffee at the St Regis.

NEXT STEPS

THREE MONTH PLAN – NEWS FLOW

- Begin Exploration of South Carolina Properties
 - Further sampling and geophysics – Budget approximately \$100K
- Review results of compilation of Rattle Snake area, South Carolina acquire additional property – Budget approx. \$25K.
- Further work at Melba - Budget approx. \$50K
- Evaluate additional acquisitions.
- Complete financing of up to \$250,000 @ \$0.05 per share with warrant and up to \$250,000 flowthrough at \$0.07 with warrant

NEXT STEPS

3 MONTH PLAN — MORE NEWS FLOW

- Continue to support Third Party Partnerships with projects
- Sign access agreements for Doyle and begin planning for 2023 program
- Prepare NI 43-101 Technical Report for Buck Lake copper deposit massive sulphide
- Make presentations for Option/Partnership at Buck Lake Copper/Zinc property
- Acquire additional ground at Rattlesnake in South Carolina based on review of compilation completed in 2022



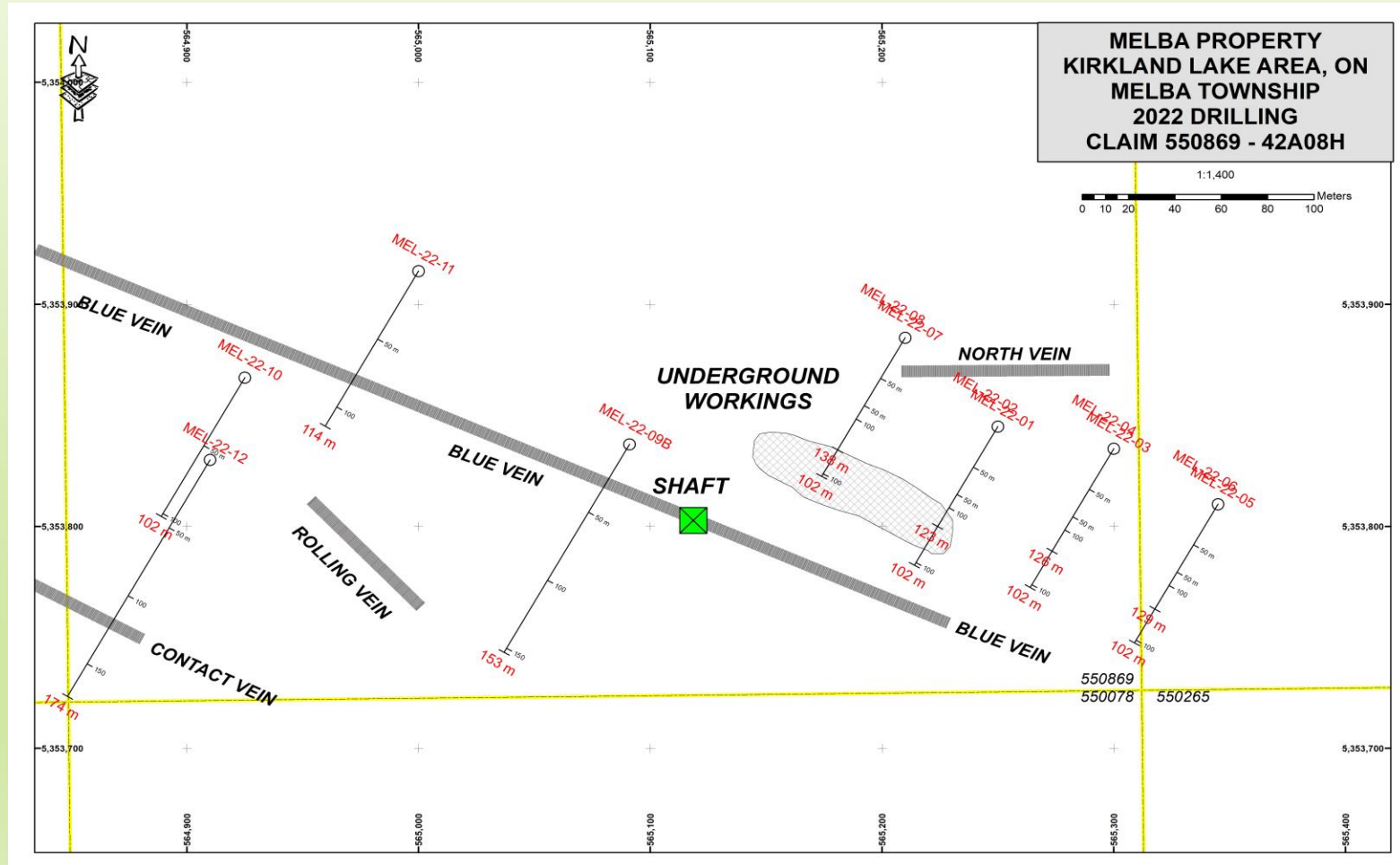
The background of the slide is a dark grey color with a faint, light brown grid pattern. Overlaid on this grid is a black ECG waveform. The waveform consists of several distinct peaks and troughs, characteristic of a heart rate signal. The text 'APPENDIX — TECHNICAL DETAILS' is centered over the waveform in a white, sans-serif font. A vertical white line is positioned to the right of the text, extending from the top of the text area to the bottom of the page.

APPENDIX — TECHNICAL DETAILS



MELBA

DRILLING LOCATIONS



TYPICAL RESULTS FROM KNOWN VEINS

Melba Drilling 2022 Assay Summary for Press Release					
Hole Number	From	To	length	Au	Ag
	meters	meters	meters	gram/tonne	gram/tonne
Mel-22-01	63.40	69.50	6.10	0.41	0.34
Including	65.20	67.10	1.90	1.00	0.88
MEL-22.02	68.60	71.90	3.30	6.60	3.46
Including	68.60	69.60	1.00	17.10	6.40

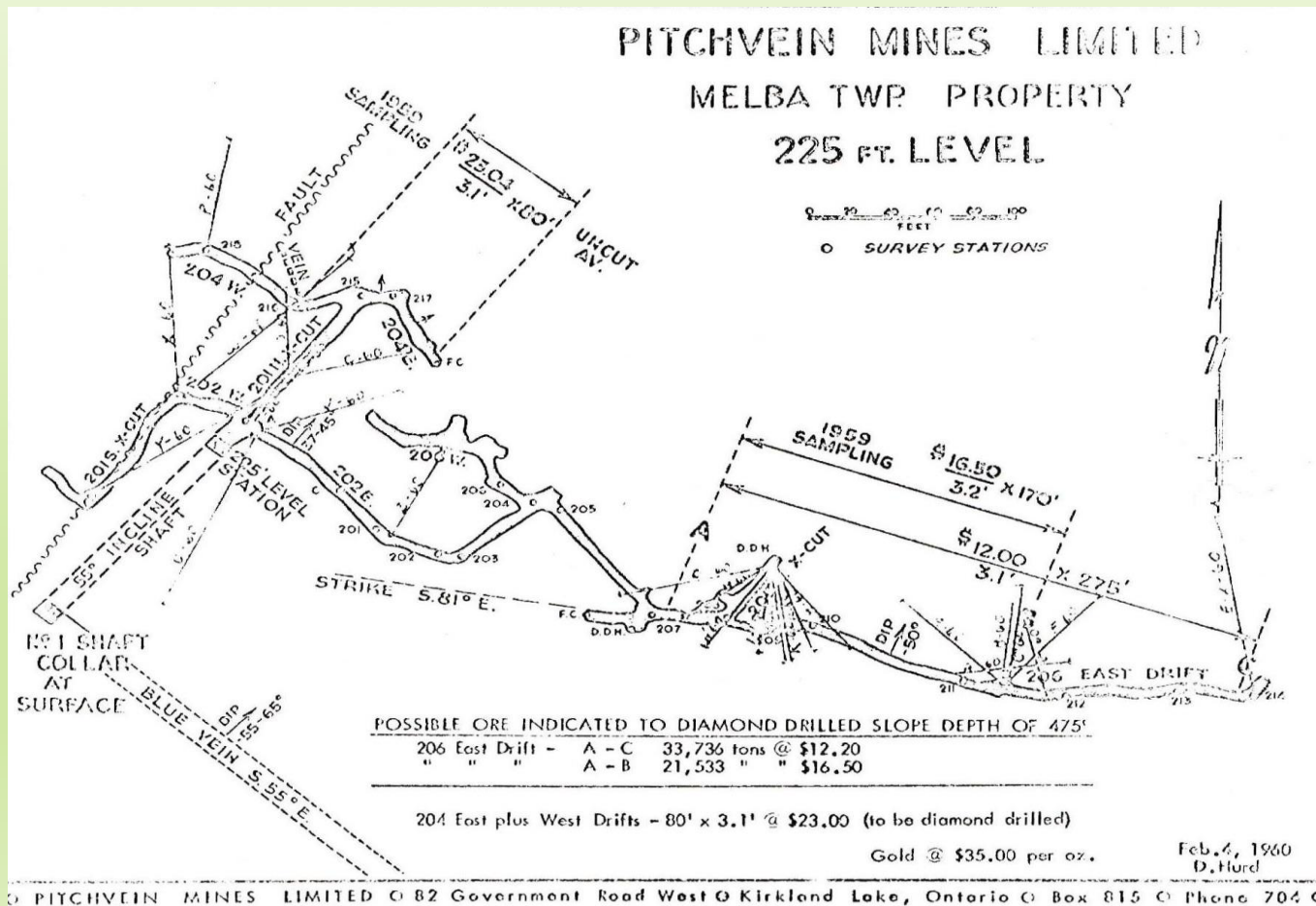
NEW STYLE OF MINERALIZATION - ANOMALOUS GOLD WITH DISSEMINATED PYRITE IN QUARTZ FELDSPAR PORPHYRY DYKES

Hole Number	From	To	length	Au	Ag
MEL-22-05	6.00	15.50	9.05	0.19	NSV
	67.30	72.30	5.00	0.70	1.30
MEL-22-06	4.50	12.50	8.00	0.13	NSV
	28.80	47.00	18.20	0.20	NSV
	53.00	59.40	6.40	0.38	0.75

DEVELOPMENT

- The property was developed in 1936 and closed due to the war
- There is a 500-foot inclined shaft with two working levels at approximately 75 and 225 feet (23 and 75m).
- A report from 1938 recommends sinking the shaft two additional levels to 300 and 500 feet (90 and 150m).

“THE 225 FOOT BLOCK OF ORE” HIGH GRADE GOLD IN CHANNEL SAMPLES



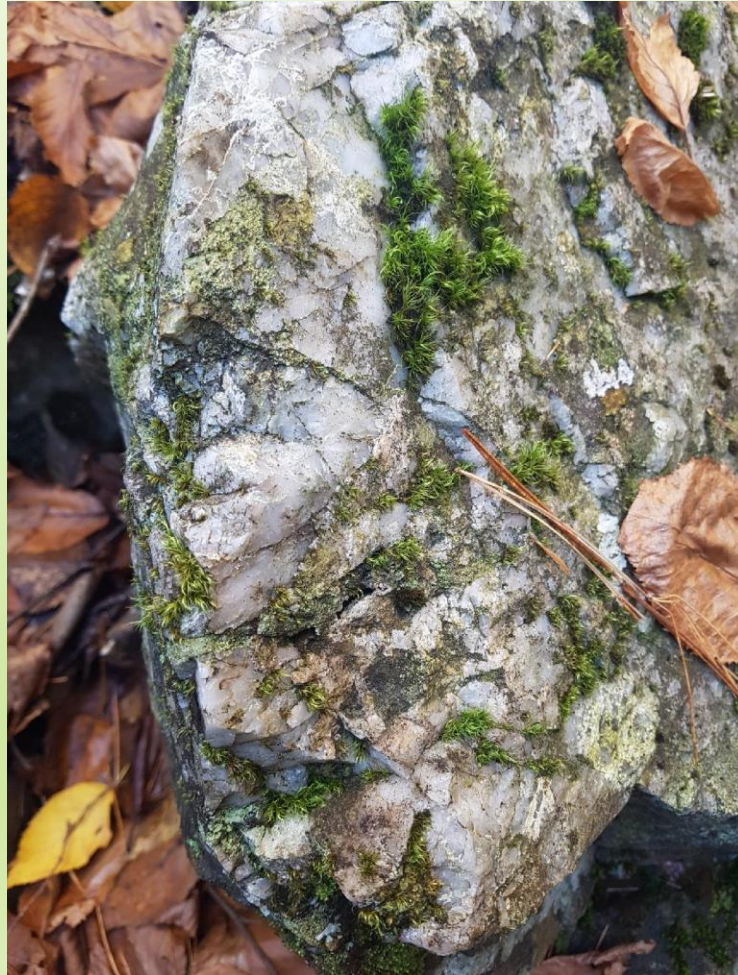
ALL MATERIAL MINED UNDERGROUND IS STILL ON SURFACE - HERE IS THE ORE PILE



WHEN WE PANNED MATERIAL FROM THE ORE PILE GOT FLAKES OF GOLD

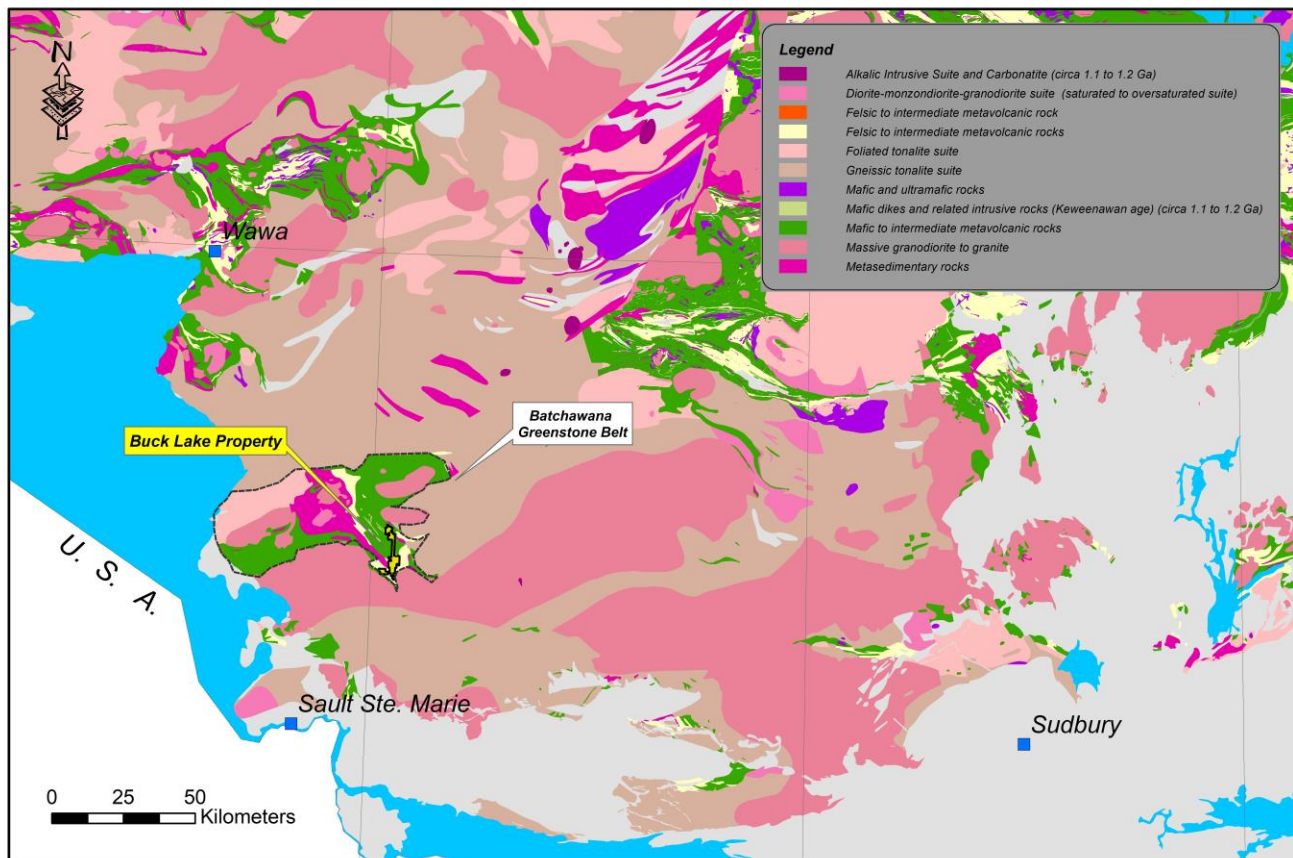


QUARTZ NEAR DRILL HOLE 84-22



DOYLE

BATCHEWANA GREENSTONE BELT

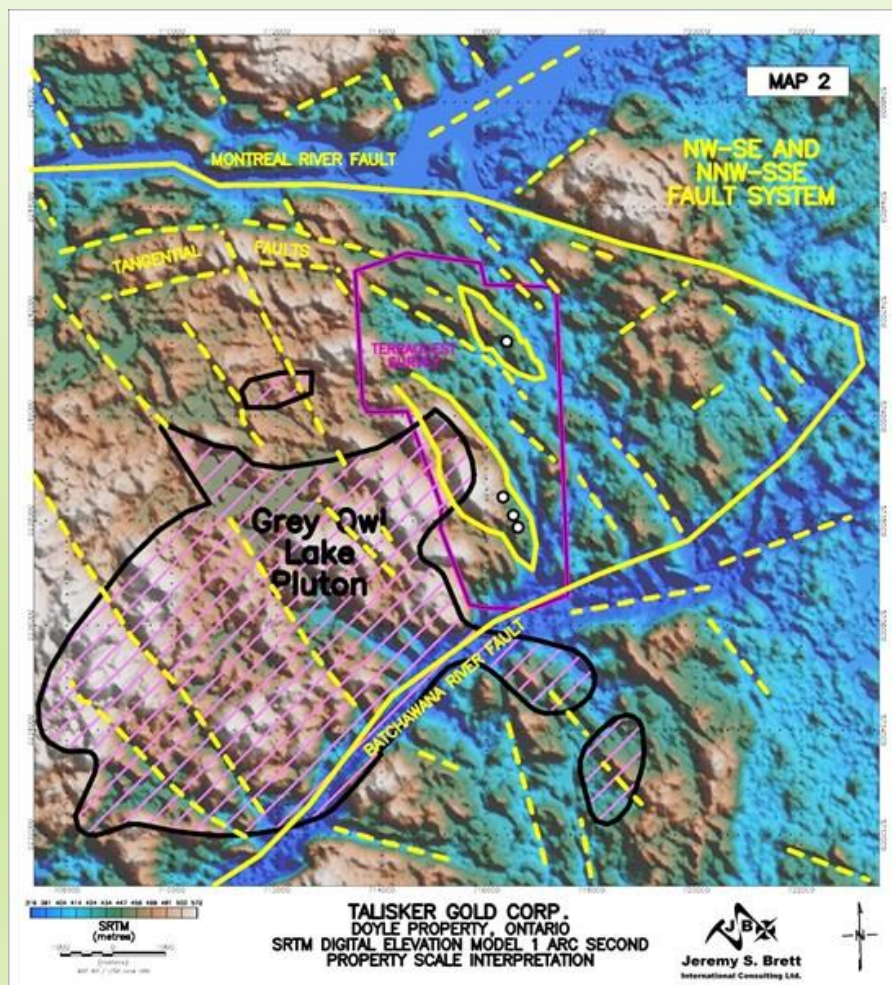


WORK COMPLETED

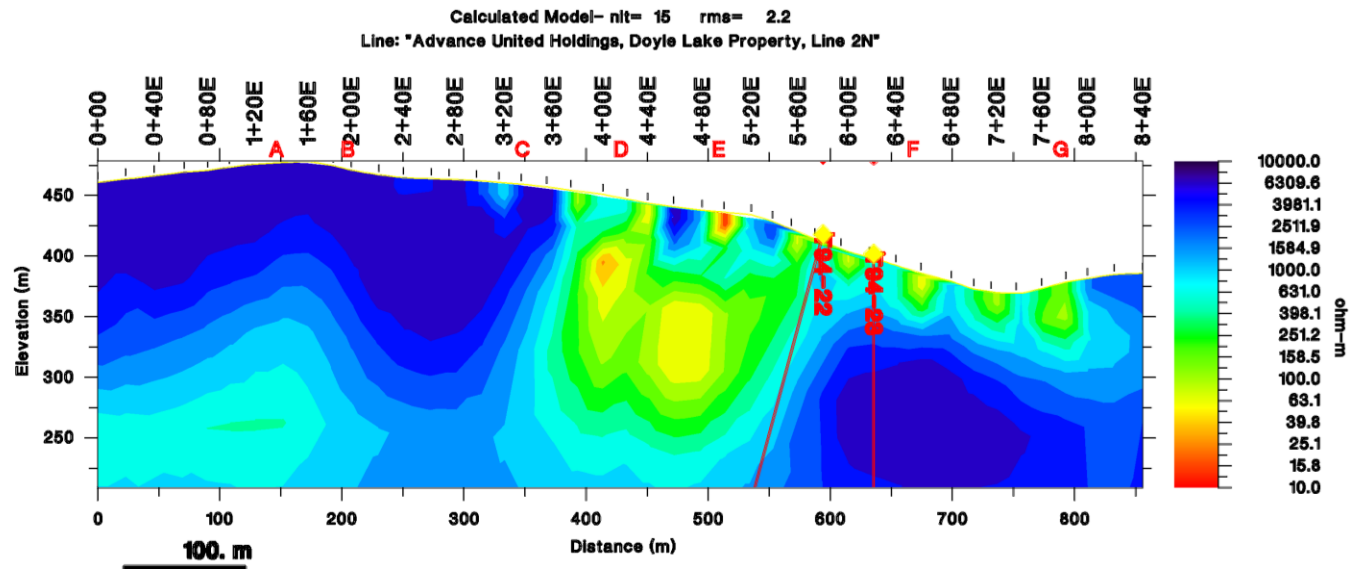
Recent Work completed

- An airborne survey with VLF EM and Magnetics over the property
- Geophysical interpretation of the survey
 - Targets indicated based on areas of known gold mineralization
- Ground VLF EM follow up over area of known mineralization with modern interpretation
- Indications that past work may not have targeted areas of low resistivity
- Limited Prospecting and sampling in new areas and confirmation of past work including drill hole locations and trenches
- LiDAR Survey over property
- Lidar Survey completed - gives detail of shear zones related to known gold occurrences and point to areas prospective for gold discoveries

DOYLE GEOPHYSICAL INTERPRETATION



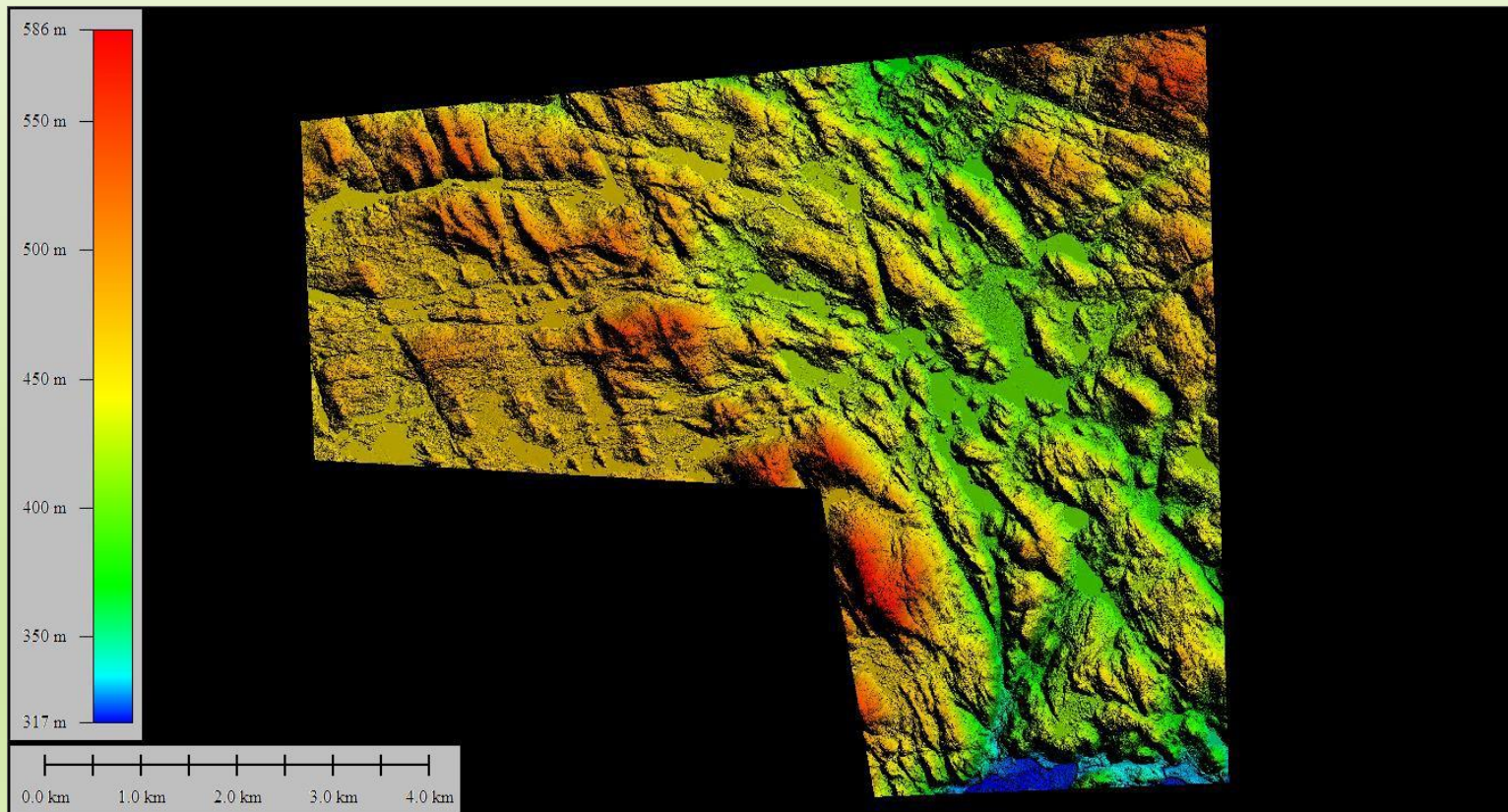
REINTERPRETATION OF RESISTIVITY NEAR DRILL HOLE 84-22 (46 G/T AU) DID PREVIOUS DRILLING MISS TARGET???



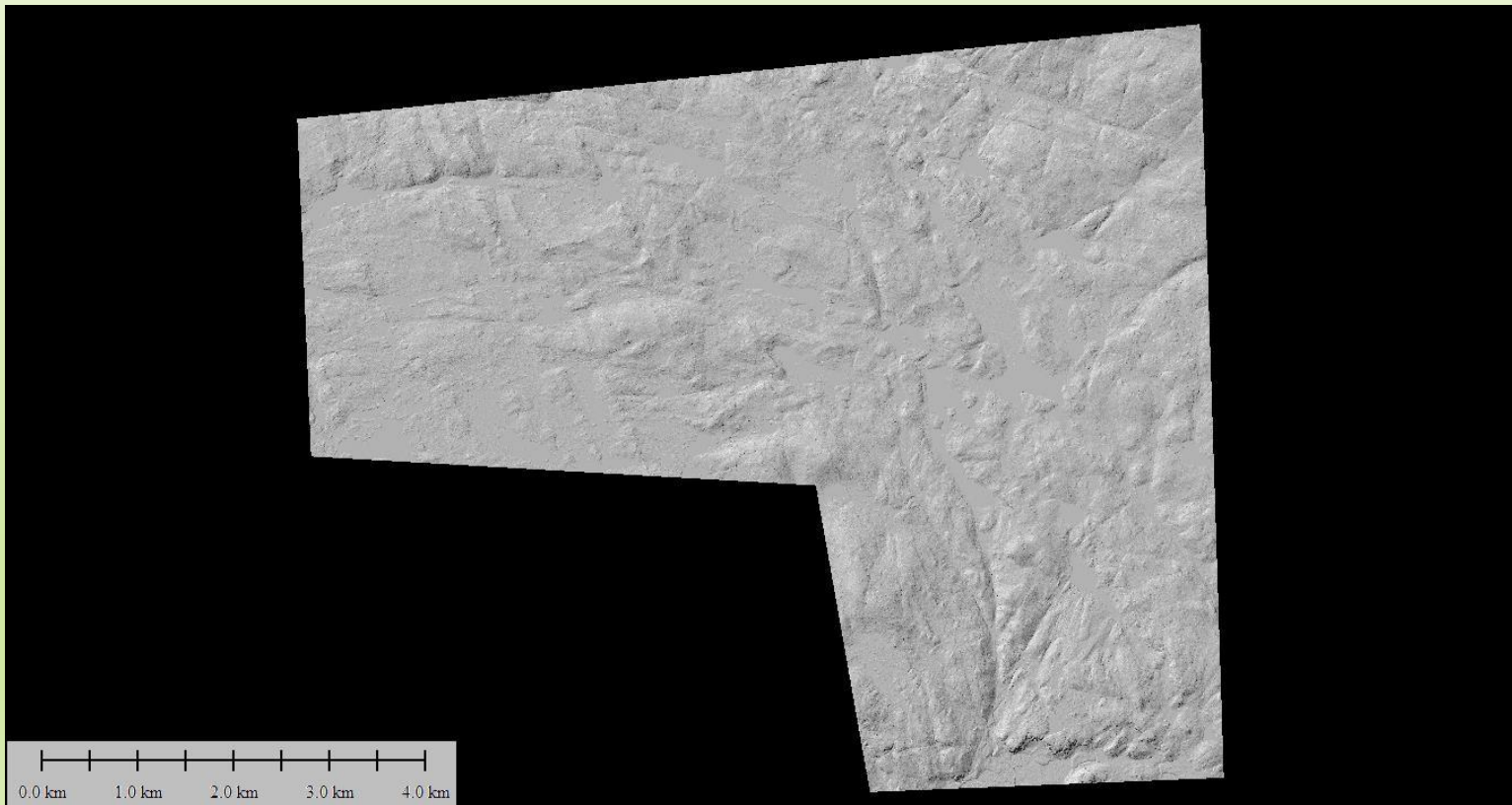
Transmitter: NAA

Vertical Exaggeration: 1.0

LIDAR DEM SHOWING FABRIC OF THE PROPERTY.



SHADED RELIEF SHOWING MAJOR STRUCTURES.



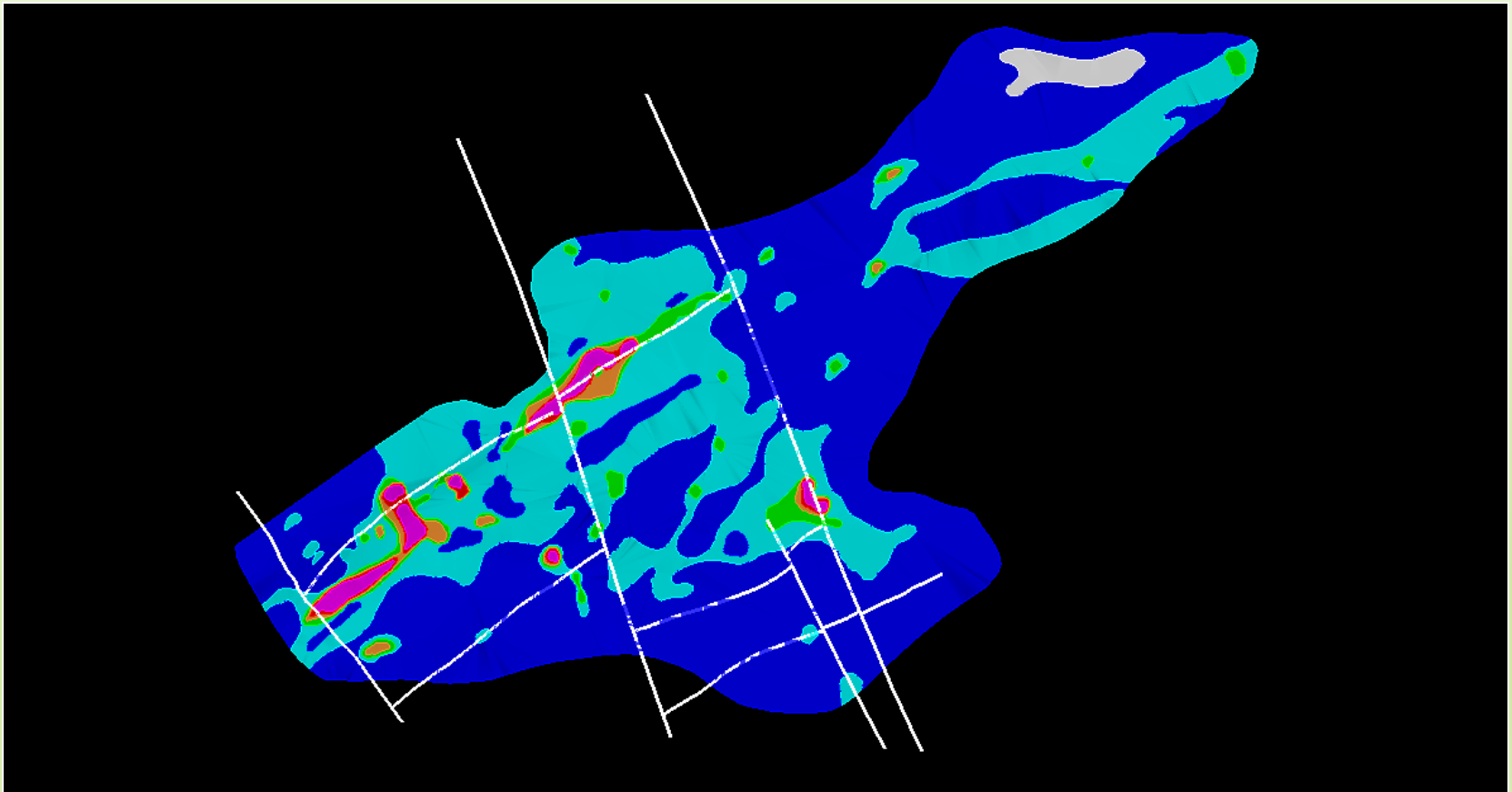
LIDAR BASED TARGETING

LANDRUM AND FAULKNER

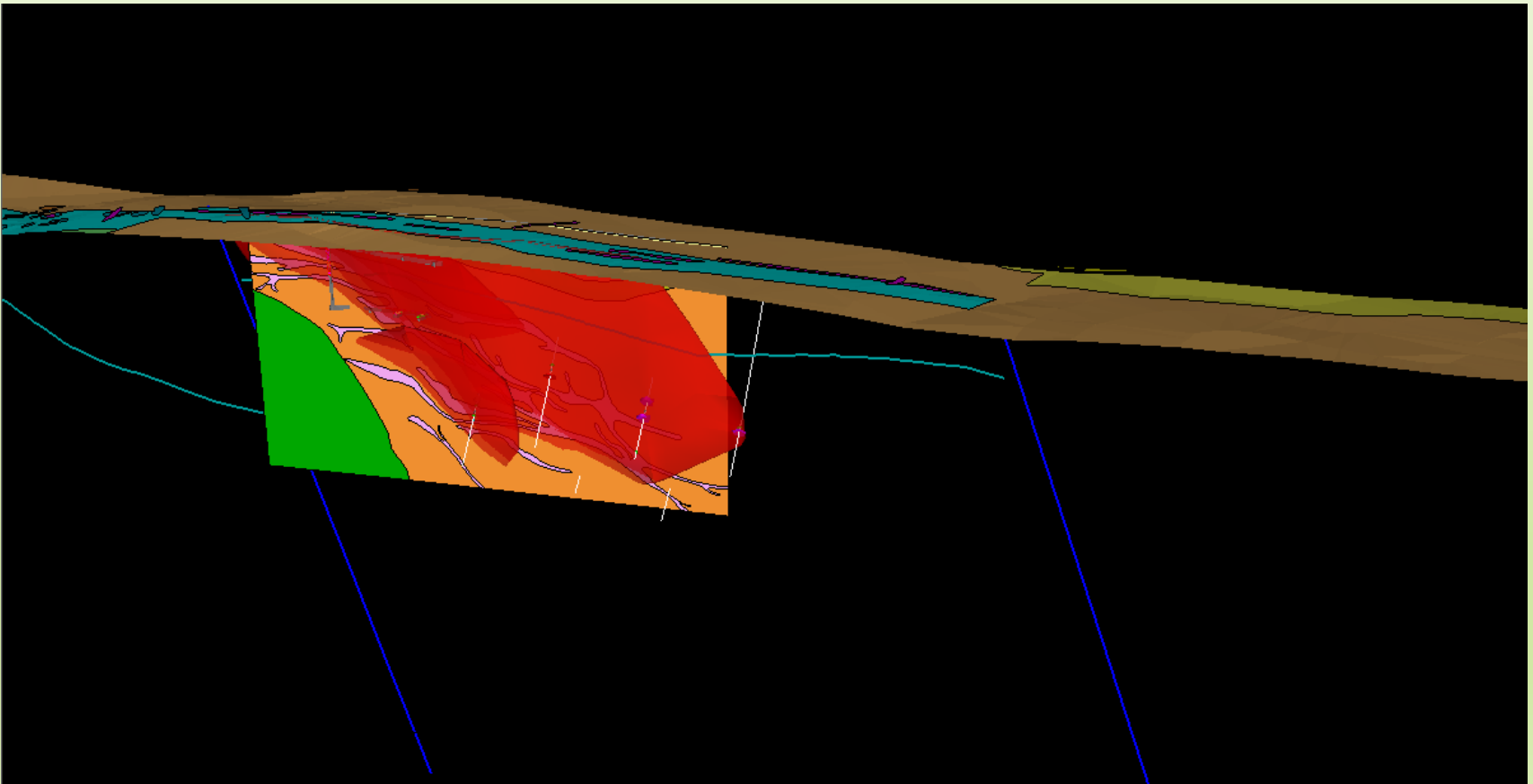
LANDRUM SURFACE GEOLOGY



LANDRUM SOIL SAMPLING



LONGITUDINAL SECTION — MINERALIZATION IS OPEN TO THE SOUTH



RATTLESNAKE

- Adjacent to former Ridgeway mine – which produced 1,500,000 ounces of gold and 900,000 ounces of silver
- Non-43-101 compliant reserve estimate of 140,000 tons of .17 opt gold as heap leach prospect
- Gold occurs in pyritic alteration zone in volcanic/sedimentary stratigraphy
- Much of the gold resides in fine grained pyrite-bearing silicified zones
- Higher grade mineralization may or may not be accompanied by visible gold-bearing, quartz-molybdenite veined zones
- Recent compilation indicates other areas of gold mineralization in similar altered units in the area

A scenic landscape photograph of Buck Lake. In the foreground, a dark green wooden picnic table sits on a sandy patch of ground. To the right, a large, mature tree with green leaves and some reddish-brown flowers stands prominently. The middle ground features a calm lake reflecting the sky, with a lush green golf course or park area in the background. The background is filled with dense green trees and rolling hills under a bright, slightly overcast sky. The text "BUCK LAKE" is overlaid in the center in a white, sans-serif font.

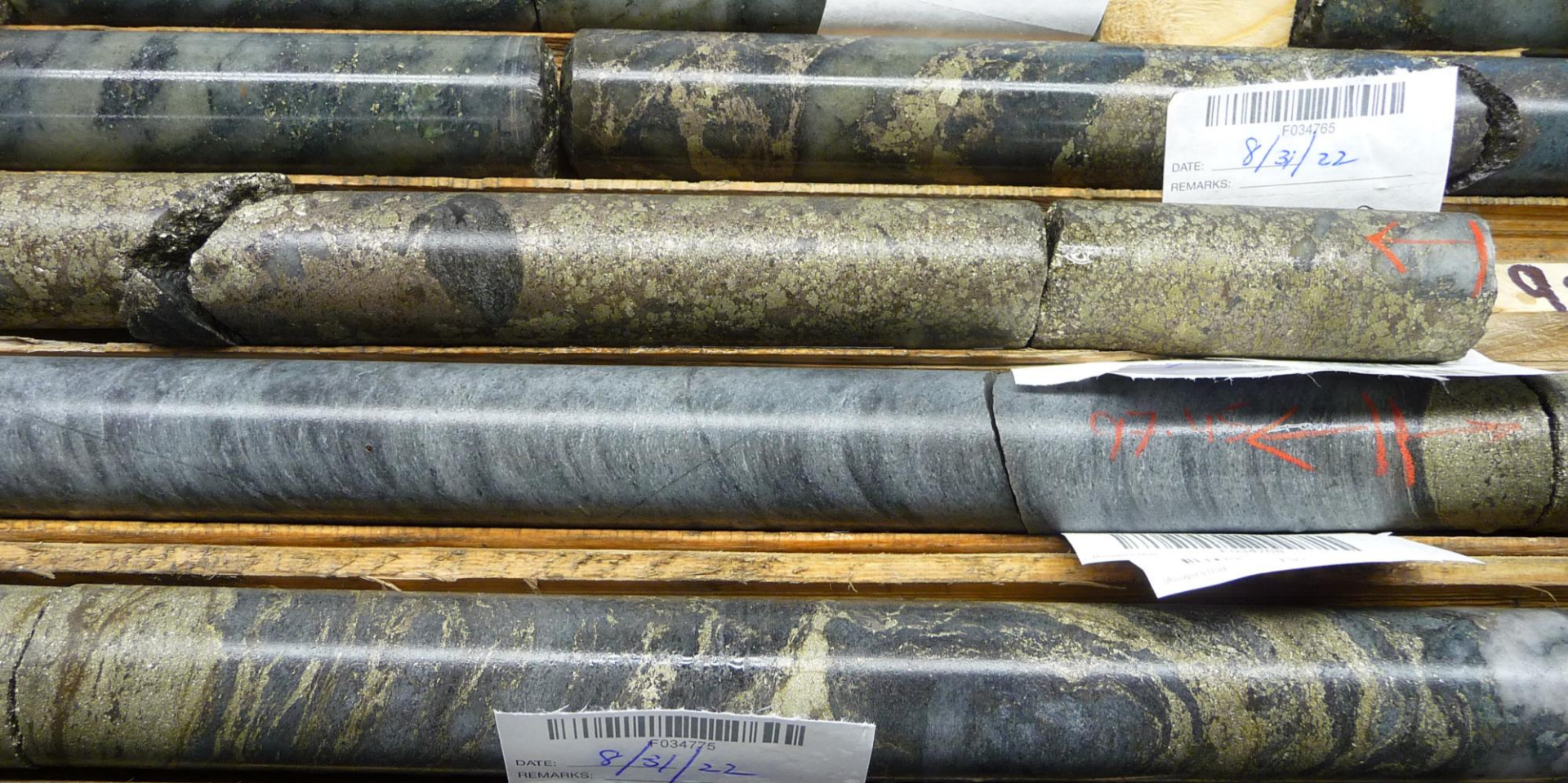
BUCK LAKE

MASSIVE SULPHIDE IN OUTCROP — 3 M WIDE



CHANNEL SAMPLING





Massive Sulphide in drilling

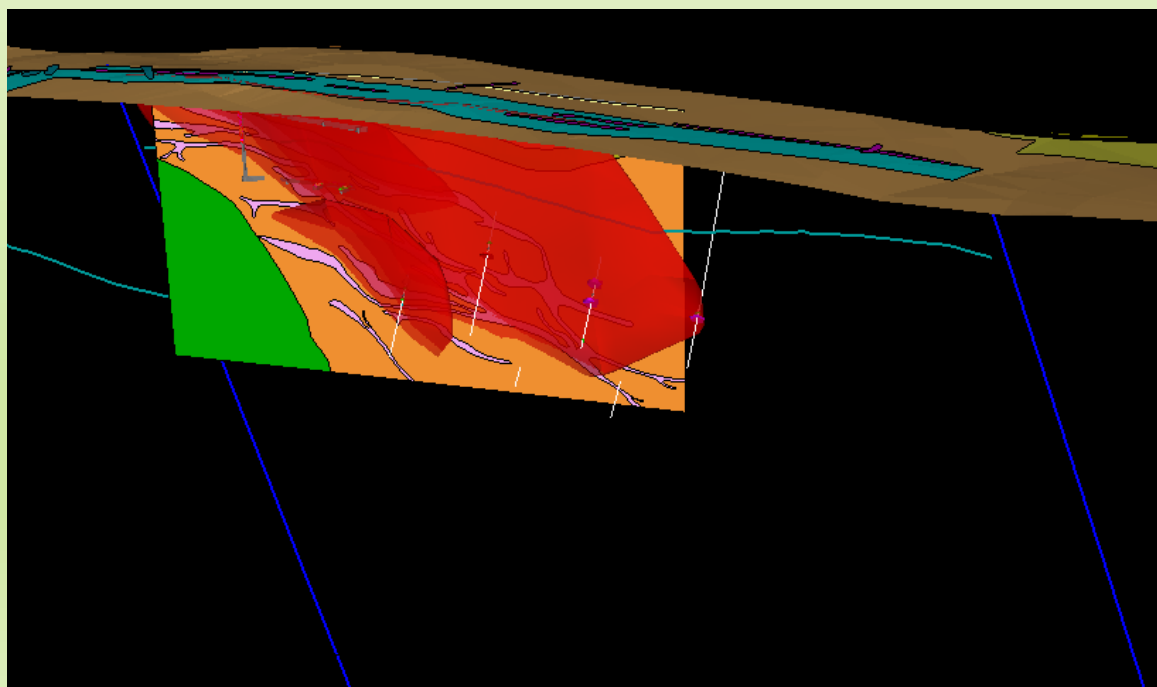


More Sulphides with Exhalite

BL-22-06	From (m)	To (m)	Length (m)	Copper %
	35.35	47.10	11.75	1.51
Including	42.35	45.45	3.10	4.59

COPPER MINERALIZATION

INTERSECTED A ZONE OF 1.5% COPPER OVER 11.75 METERS IN DRILL HOLE BL-22-06 INCLUDING 3.1 M OF 4.59% COPPER



WE BELIEVE IN BOOTS ON THE GROUND



Contact us

Jim Atkinson, CEO
Advance Gold Exploration Inc.
372 Bay Street, Suite 301
Toronto, Ontario
M5H 2W9 Canada
Tel: + (647) 278-7502
Email: jim.atkinson@advanceunited.ca